

# MOLONGLO CATCHMENT GROUP

On the Molonglo Catchment Group website this week,  
January 23<sup>rd</sup> 2012:



- [Molonglo Catchment Group Meeting Calendar](#) (← = New this issue ← = new last issue)

## Announcements:

- [Weed Alert - Fireweed](#)
- [Weed Alert - Mexican Feather Grass](#)
- [Weed Alert - African Fountain Grass](#)
- [Development of a Master Plan for Jerrabomberra Wetlands](#)
- [Water = Life? - 8th "Along the Molonglo" Art Exhibition](#) ←
- [Snakes Alive! 23-29 January](#) ←
- [Molonglo Waterwatch - December 2011 in our Catchment](#) ←
- [River restoration work at Oaks Estate](#) ←

## Funding:

- [FarmReady Reimbursement Grants](#)
- [Environmental Restoration and Rehabilitation Community Bush Regeneration Large Project Stream Grants – closing date extended to 14 February](#) ←
- [Biodiversity Fund application round now open](#)
- [Action on the Ground - Carbon Farming Futures Grant Program Open](#)
- [Caring For Our Country – 2012/13 Business Plan Released](#)
- [WONS Control Grants Available for Work within the ACT](#) ←
- [ActewAGL Source Water Protection Program Grants](#) ←

## Training / Conferences / Forums:

- [PestSmart Roadshow – Queanbeyan, 30 January](#) ←
- [Friends of the ANBG Thursday Lunchtime Lecture Series](#) ←
- [Don't be a Drifter Herbicide use workshop - 18-19 February](#) ←

## Field days / Workshops / Walks-and-Talks:

- [Sustainable horse management on small properties – community field days](#)
  - [Community field days:](#)
    - Wamboin – 28 January 2012
    - Michelago – 29 January 2012
    - Murrumbateman – 18 February 2012
    - Venue TBC – 26 February 2012
- [Monaro Landscape Connectivity project workshop – Date TBC April-May](#) ←
- [Greening Australia Community Events](#)
  - [Don't forget the regular volunteer opportunities](#)

## Resources:

- [ChemCert training subsidy](#)
- [Subsidy available for First Aid courses](#)
- [Landcare Display Trailer available](#)
- [Botanical Resource Centre – Plant Identification at Your Fingertips](#) ←
- [Atlas of Living Australia](#)
- [Blackberry Control Brochure](#)

---

## Molonglo Catchment Group Meeting Calendar

### Catchment Group meetings are for everyone

The Molonglo Catchment Group usually meets the **second Monday of every month**. Catchment Group business will be conducted **between 5.00 and 6.30pm**. Please feel free to come along and participate. For more information, contact the [Coordinator](#).

Date	Venue
Monday 13 February, 2012, 5-6:30pm	MCG Meeting Room Unit 13, Cassidy Arcade 72-76 Monaro St, Queanbeyan
Monday 19 March, 2012, 5-6.30pm	MCG Meeting Room Unit 13, Cassidy Arcade 72-76 Monaro St, Queanbeyan

## Weed Alert - Fireweed

**Fireweed** (*Senecio madagascariensis*) Family *Asteraceae*

(from [TAMS media release dated 14 October 2011](#)  322KB)

Canberrans are being urged to be on the lookout for a new incursion of weed species that has recently been identified in the ACT – Madagascan Fireweed (*Senecio madagascariensis*).

“While the weed is commonly found in the surrounding NSW region, this is the first serious incursion of Madagascan Fireweed in the ACT,” said Steve Taylor, Senior Invasive Weeds Officer, ACT Parks and Conservation Service.

“The first plant was spotted by a member of the public on the Monaro Highway just outside the ACT border and since then plants have been spotted at two other locations in the ACT. These plants have been destroyed.

“Rangers will proactively monitor the areas in which the plants were found.

“Madagascan Fireweed is a small multi-stemmed and vigorous flowering daisy-like plant with numerous bright yellow daisy flowers. Like other daisies, the weed produces fluffy wind borne seeds. Some plants can produce tens of thousands of seeds.”

Mr Taylor said a rapid response to uncover and control the weed will save the ACT significant expenditure in future weed control.

“Eradicating Madagascan Fireweed swiftly will ensure continued protection of our valued native plant communities and grazing lands.

“Another major concern is the toxicity of Madagascan Fireweed to horses and livestock which can cause liver damage similar to toxins found in Paterson’s Curse. Madagascan Fireweed is considered one of the most damaging weeds to grazing land. It often first invades land along roadsides and once established, quickly spreads into neighbouring pastures and reserves.

“I urge the ACT community to be alert to Madagascan Fireweed and help us be proactive in managing this invasion of our natural habitat.

“Due to its bright yellow flowers Madagascan Fireweed is likely to be noticed by passing motorists.

“If you suspect you have seen Madagascan Fireweed please take note of the location and call Canberra Connect on 13 22 81 [if in the ACT]. Taking a photo of the suspected plant may also help save time in confirming reports.”

Fireweed was found in the ACT in September 2007 and had been found beside the Captains Flat Road in Carwoola in NSW in 2008. Previously, it was believed that winter frosts would limit its spread on the tablelands, but experiences in Snowy and Cooma-Monaro Shires indicate that this is not the case. Fireweed normally occurs along the South Coast and north of Goulburn. It is highly invasive and toxic to horses.

**Description:** Fireweed is a low branching annual herb with leaves 2-6 cm long, occasionally 8-10 cm on older, vigorous plants. Bright green, thin, slightly fleshy, toothed or smooth-edged, hairless, alternate on stem. Seeds are very fine, ‘dandelion’-like seed heads. Usually seeds during spring. The flowers are 13-petaled yellow daisy flowers held on slender stems in branched terminal open clusters from April to September. Before opening, the flowers are enclosed by a single row of about 21 green bracts (a ring or crowd of modified leaves, usually smaller than a true leaf) which have a darkened tip; the number of bracts distinguish it from native *Senecio* species. The bracts are easiest to count just before the flower opens out to reveal the ‘petals’, when the bract tips are all clustered at the top of the ‘bud’, or after the seed has been shed when the bracts remain behind.

**Contact:** If you think you have spotted this weed, please contact:

- In the ACT: Canberra Connect on 13 22 81
- In Queanbeyan City Council area: phone 6298 0101 or email [weedsofficers@qcc.nsw.gov.au](mailto:weedsofficers@qcc.nsw.gov.au)
- In Palerang Council area: phone 6238 8111 or email [records@palerang.nsw.gov.au](mailto:records@palerang.nsw.gov.au)

**Further Information:** [www.weeds.org.au](http://www.weeds.org.au)

[Download Fireweed Factsheet](#) from the Molonglo Catchment Weed Information Pack ( 364KB).



## Weed Alert - Mexican Feather Grass

**Mexican Feather Grass** (*Nassella tenuissima*) Family *Poaceae*

**Update:** it has recently come to notice that over 300 plants of Mexican Feather Grass (MFG) have been sold through Canberra nursery outlets. It was probably labelled as *Stipa*. **If you have bought *Stipa* plants from any nursery outlets in the ACT or region within the last 12 months, please have the plant checked, or check it yourself.** There are many good illustrated website descriptions available.

This species has the potential to be as bad as Serrated Tussock as an agricultural and environmental weed. It is not yet established in the ACT, and we really don't want it here either! If uncontrolled, it could spread to other states of Australia. Overseas, it is highly invasive and has formed monocultures, smothering desirable species. Importation into Australia is prohibited.

**Description:** MFG is a densely tufted perennial grass, **almost identical to serrated tussock**. MFG produces more seed than the related invasive weed, serrated tussock and is a slightly taller plant (leaves to about 60 cm long and flower spikes to 70 cm). The leaves are very similar to serrated tussock. **The seed is similar to the seed of native *Stipa* grasses (speargrasses).** The awn or bristle-like attachment to the seed is 4.5-9 cm long. The seed itself is 2-3 mm long. MFG flowers from mid spring to summer.

**Contact:** If you think you have spotted this weed, please contact:

- In the ACT: Canberra Connect on 13 22 81
- In Queanbeyan City Council area: phone 6298 0101 or email [weedsofficers@qcc.nsw.gov.au](mailto:weedsofficers@qcc.nsw.gov.au)
- In Palerang Council area: phone 6238 8111 or email [records@palerang.nsw.gov.au](mailto:records@palerang.nsw.gov.au)

**Further Information:** [www.weeds.org.au](http://www.weeds.org.au)

[Download](#) flyer (📄 1.65MB)



## Weed Alert - African Fountain Grass

**African Fountain Grass** (*Pennisetum setaceum*)

Family *Poaceae*

The invasive weed, African Fountain Grass, has been discovered in the ACT. It is often mistaken for similar ornamental grasses such as Foxtail Grasses and other Fountain Grasses. It has the potential to spread into natural areas and agricultural land causing considerable damage and control costs. African Fountain Grass is prohibited for sale in the ACT. It is also a noxious weed in NSW.

African Fountain Grass is a large tussock grass. It has numerous plume like seed heads which are between 10cm and 25cm long. They are mauve in colour.

**Contact:** If you think you have spotted this weed, please contact:

- In the ACT: Canberra Connect on 13 22 81
- In Queanbeyan City Council area: phone 6298 0101 or email [weedsofficers@qcc.nsw.gov.au](mailto:weedsofficers@qcc.nsw.gov.au)
- In Palerang Council area: phone 6238 8111 or email [records@palerang.nsw.gov.au](mailto:records@palerang.nsw.gov.au)

**Further Information:** [www.weeds.org.au](http://www.weeds.org.au)



---

## Development of a Master Plan for Jerrabomberra Wetlands

The ACT Government is conducting community consultation on a Master Plan to guide future development of the Jerrabomberra Wetlands Nature Reserve. The consultation will include face to face meetings and focus groups with key stakeholders and a public exhibition period with an on-site public information session.

Consultation with key stakeholders, including local Aboriginal groups and neighbouring businesses and residents, occurred during July and August 2011 seeking insights and feedback to inform the development of the Master Plan. The draft master plan will be released in early 2012. During the public exhibition period in 2012, the draft Master Plan will be available online and in shopfronts and public libraries for community-wide comments and feedback.

For more information, visit the [Territory and Municipal Services website](#)

## Waterwatch October 2011 Newsletter



It's chock-full full of information and not just for Waterwatchers!

Articles in this issue:

- Catchment Health Indicators Jan-Jun 2011
- What's Happening
  - ACWA Update
  - Shocking CHI Results: Water Improves River Health!
  - QA/QC Training
  - Conservation Planning and Research Volunteer Fieldwork Schedule
- News from the Cooma Region
  - Community Effort Improving Numeralla River
  - Murrumbidgee River Environmental Flow Release 2011
- Frog Findings
  - Frogwatch Beyond Halloween
- The Vegged Edge
  - When and Where for a Leaky Weir
- Platypus Page
  - Platypus Death Highlights Need for Anglers to Show Care

[Download](#) Newsletter (  999KB)

## Snakes Alive!

Every year the ACT Herpetological Association (ACTHA) and the Australian National Botanic Gardens (ANBG) put on a week long exhibition in January showcasing a variety of Australian reptiles and amphibians.

The ANBG publicises the event and provides an idyllic location amongst the world's 'best collection of Australian plants', and ACTHA members provide the animals for the display and staff the exhibit.

Funds raised through Snakes Alive! give ACTHA the opportunity to make donations to regional conservation problems such as the northern and southern corroboree frog breeding programs and projects aimed at furthering herpetofauna protection and recovery, education, training, and research projects.

Species local to the ACT region are displayed when available, such as the highly endangered Northern Corroboree Frog (*Pseudophryne corroboree*) and threatened species such as the Grassland Earless Dragon (*Tympanocryptis pinguicolla*) and Striped Legless Lizard (*Delma impar*).

Members of the public receive an exceptional educational experience with the opportunity to learn about herpetofauna hands-on from dedicated ACTHA members who staff the event.



<b>When:</b>	Monday 23 to Sunday 29 January. Weekdays 10am - 4pm. Weekends 10am-6pm
<b>Where:</b>	Crosbie Morrison Building, Australian National Botanic Gardens
<b>Cost:</b>	\$2 child; \$5 adult; \$4 concession

## Lyneham Wetland Community Planting Day

There is still much to finish at the new storm-water wetland in Lyneham, but it was most enjoyable to have the twilight community planting on the afternoon of Sunday 4 December.

A goodly selection of locals made an appearance, with children and dogs in tow. Things went in quickly and the area was planted out by 6:00 pm. The spotted grass frogs on the western bank tried hard to compete with the corer. People asked about mosquitoes, and native and feral fish, and if it would look as good as Banksia St. The plovers glared back from the still bare island; the wood ducks made several flypasts. And we had television coverage!



## M-CHiP 6-Monthly Report January-June 2011

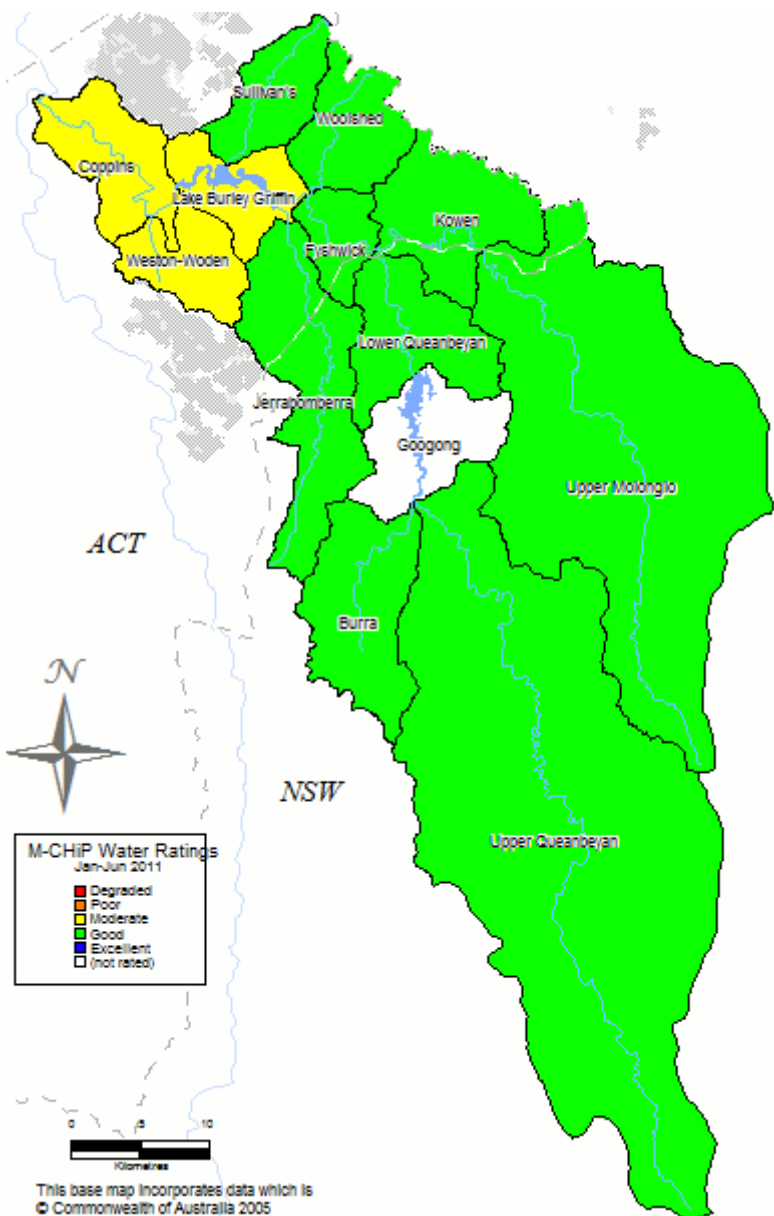
While eight of the Molonglo Catchment sub-catchments were in the 'Good' range in the first half of 2011, many of them scored at the high end and so indicated a creep in catchment health towards 'Moderate'. This may well be explained by the combined effects of flood recovery phenomena and the sudden return, at the end of March, to unseasonably warm and dry weather, a condition that persisted into the winter months.

The Weston Creek area in the Weston–Woden subcatchment is undergoing major urban development. This has reduced the catchment health indication for the whole subcatchment. The margins of Lake Burley Griffin are continuing to indicate only moderate water health, but this is to be expected in such a structure, and Coppins sub-Catchment is demonstrating end of stream Moderate health indications as usual. The closed system on the floor of the Lake George valley has health indications right on the boundary between Good and Moderate, probably a sound reflection of the condition of a largely rural sub-catchment.

The indications from the 2010 ACT Frog Census are for the long period of drought that preceded the floods in December 2010 and February 2011 and it is expected that the 2011 census will reflect the better recent conditions.

The key recommendations from the first half of 2011 are that we need to continue to engage with the wider community, especially the developers, to make sure that waterways are looked after as the cities of Queanbeyan and Canberra expand.

[Download](#) the complete report (  1.75MB)



## Sustainable Farming in the Majura Valley

In 2010, the Landholders and caretakers of the Majura Valley, through the Rural Landholders Association and the Molonglo Catchment Group, were successful in receiving an Australian Government Caring for our Country grant. This funding was to be used to create a report considering “Sustainable Farming in the Majura Valley.”

The completed Report identifies the impact of the proposed Majura Parkway development on the Majura Valley, and its impact on individual Landholders.

Through the research conducted over a twelve month period, Landholders have created an exciting Vision for the future of the Majura Valley. This Vision includes boutique industry, primary production, light industry, historic restoration, and the re-establishment of native grassland and woodland in the Valley.

Landholders are proud to release this document in September, 2011.



*Sherry McArdle-English introduces Stephen Howard, Project Manager for the Majura Parkway at the launch of the report on 13 September*

## Water = Life?

### Eighth “Along the Molonglo” Art Exhibition

Since 2003, the “Along the Molonglo” Art Exhibition has been a collaborative venture between the Molonglo Catchment Group (MCG) and the Artists Society of Canberra (ASOC).

This year the theme is *Water = Life?* In essence it draws on the link between water and life within and beside streams/wetlands; human activities and emotions relating to rivers, lakes and ponds; and the positive and negative impacts of drought, occasional flooding and human intervention in the form of innovations. The question mark reflects the evolution of ecosystems in our catchment.

The Exhibition will be held at the Discovery Centre, CSIRO opening to the public at 10.00 am on Tuesday April 24 with the official opening ceremony at 6.30 pm. Thereafter, public access will be daily from 10.00 am to 5.00 pm on Wednesday to Friday, and 11.00 am to 3.00 pm on Saturday and Sunday – closing Sunday April 29.

Prizes for the best-judged entries have been generously donated:

- 1st Prize - \$2000 by the ACTEW Corporation
- 2nd Prize - \$500 by the Molonglo Catchment Group
- 3rd Prize - \$200 Gift Voucher by Pepe’s Paperie, Philip

For more information see the [Along the Molonglo page](#) and visit website at the Artists Society of Canberra: [www.asoc.net.au](http://www.asoc.net.au)

---

## Australian National University bird survey

The Australian National University Sustainability Office ANUgreen is preparing for our seasonal bird surveys for 2012-13, and we are hoping for as many volunteers as possible. These surveys will be an important step in monitoring and protecting native birds in the ACT region. Experience not essential, and training will be provided. Our first planned survey will take place on Saturday 21st January 2012. A free BBQ will be provided as thank you to our volunteers.

If you could please circulate the above info within your workplace and networks and encourage people to join, it would be greatly appreciated. To register, please go to the ANUgreen website [www.anu.edu.au/anugreen/index.php?pid=48#ANU](http://www.anu.edu.au/anugreen/index.php?pid=48#ANU)

---

## Snakes Alive!

Every year the ACT Herpetological Association (ACTHA) and the Australian National Botanic Gardens (ANBG) put on a week long exhibition in January showcasing a variety of Australian reptiles and amphibians.

The ANBG publicises the event and provides an idyllic location amongst the world’s ‘best collection of Australian plants’, and ACTHA members provide the animals for the display and staff the exhibit.

Funds raised through Snakes Alive! give ACTHA the opportunity to make donations to regional conservation problems such as the northern and southern corroboree frog breeding programs and projects aimed at furthering herpetofauna protection and recovery, education, training, and research projects.

Species local to the ACT region are displayed when available, such as the highly endangered Northern Corroboree Frog (*Pseudophryne corroboree*) and threatened species such as the Grassland Earless Dragon (*Tympanocryptis pinguicolla*) and Striped Legless Lizard (*Delma impar*).

Members of the public receive an exceptional educational experience with the opportunity to learn about herpetofauna hands-on from dedicated ACTHA members who staff the event.



<b>When:</b>	Monday 23 to Sunday 29 January. Weekdays 10am - 4pm. Weekends 10am-6pm
<b>Where:</b>	Crosbie Morrison Building, Australian National Botanic Gardens
<b>Cost:</b>	\$2 child; \$5 adult; \$4 concession

On the Molonglo Catchment Group website this week: January 23rd 2011  
[www.molonglocatchment.org.au](http://www.molonglocatchment.org.au)

## December 2011 in Our Catchment.

Here we are at Midsummer (I'm writing this on the 20<sup>th</sup> December) and we still haven't had three hot days! Well, at least the water table is well filled and the landscape looks wonderful. Some of you will know that I sometimes get the privilege to be a Botanist on my two other days each week. This year there is a concerted effort going on to line up the classification of vegetation communities on the southern tablelands with the rest of the country, and that involves the ACT of course. We have, as did the alpine botanists, given local names to communities and now we need to line things up a little more carefully. It has afforded me the opportunity to visit and inspect in detail many of the wetland and swampy communities in our area. Just for the moment it all looks very healthy, but it may take some effort to keep it looking so good.



Ginini West Bog in December 2011

### Your Results

Most sites appear to have good, clean water that meets expectations, even in built-up areas. Perhaps the good rains are flushing the system well. The report of bottle green tufts or cushions of algae at Whiskers Creek suggests that the healthy, and nitrogen fixing alga *Nostoc* is growing there. Continued low dissolved oxygen percentages and elevated phosphate levels in the bottom of Sullivans Ck at ANU is in contrast with the other Sullivans Ck reports. Just what the white stuff in the GPT at Flemington Pond is would be interesting to know. Thank you all very much!

### Feral Fish

Most people think of European Carp or Plague Minnows when you mention Feral Fish! But there is rather more to the story than that. We have introduced all kinds of fish into Australia, either in the now quaint Victorian perception that native fish were dangerous or unpalatable or imperfect, or in various animal husbandry and biological control exercises.

Trout, like rabbits, foxes and deer, may provide great sport, but they are foreign and demand the aquatic communities change to suit them. Like the terrestrial ferals they put high demands on the native food animals (the mayflies, stoneflies and caddis they love, as larvae and as adults) so they change the dynamics of the food chains in aquatic systems. This usually works against the native higher order predators (fish, amphibians, reptiles and even platypus) and over time they leave the community.

Redfin are good eating. Schools of juvenile redfin are ravenous and gobble up whatever they encounter, especially other young (native) fish. They are also the carriers of a viral disease that may cause epidemics in native fish. Oriental weather loaches are similarly competitive, and are capable of outcompeting smaller native fish in areas where they occurs. They are omnivorous and can have the same effect on a river pool as over-stocking has on a paddock; all that is left is hardy and unpalatable, and may even be imported itself.

And then there are goldfish. They are not the pest other feral fish are, but they almost always have a human source! The trout fishermen would rather you didn't release your unwanted goldfish into their trout streams, as goldfish spread ulcers ... well, well. Of more concern is just their presence in a place where they should not be! Don't release your unwanted goldfish into the drain or the local creek ... you wouldn't do this with a kitten or pup ... I hope!

This all came up as there was a recent report of goldfish well up the Molonglo, above the Hoskinstown Plain.

### Waterwatchers' Calendar

Date	Event	Location	Time
Thursday 2 <sup>nd</sup> February	World Wetland Day	Events planned at ACT Urban Wetlands	

## River restoration work at Oaks Estate

17 January, 2012

As part of the ACT Government Restoration of Waterways and Surrounds Project, poisoning of environmental woody weeds is soon to commence along the banks at Oaks Estate.

This work will be undertaken: along the Queanbeyan River between the rail bridge and the confluence of the Molonglo River and; downstream on the Molonglo River to River Street.

Please be advised:

- The poisoning does not include: native trees or shrubs; a stand of Elms; some mature Poplars (*Populus nigra*).
- The poisoning works are expected to take a few weeks.
- The poisoning includes the blackberries in the area. Signage will be erected on location advising this.
- Poisoning will involve a few techniques such as stem injection, frilling and foliar spraying.
- All chemicals to be used are suitable for use near waterways and all care will be taken to protect native vegetation and wildlife.
- The contractors are highly skilled and have extensive experience in this type of work including in sensitive riverine environments.
- Once the poison has taken effect, the tree (and other woody weed) removal work will commence. Heavy machinery will be operating in the area.
- At times, there will be restricted access to areas while this work is undertaken. Sections of the walking path will need to be closed for public safety.
- Once tree removal commences the landscape will be altered dramatically. Fortunately, due to the presence of existing native vegetation in sections, and the retention of some mature exotic trees, the area will not be left completely cleared.
- The tree removal will open up the area visually, and make the river more accessible, creating an expansive area for recreational use and enjoyment.
- Following tree removal, revegetation and habitat restoration will commence in Autumn.



Remember, sustainable, environmental restoration takes time - the full benefits of the project will not be realised immediately.

For more information contact Canberra Connect on 132281



# Funding

---

## FarmReady Reimbursement Grants

FarmReady Reimbursement Grants, for courses completed prior to 30 May 2012, assist primary producers and Indigenous land managers to attend approved training courses aimed at improving their capacity to adapt to climate change and increase self reliance and preparedness.

**Applications forms need to be lodged and approved prior to attending approved courses**, followed by submitting the claim for reimbursement (up to 30 days after the completion of the course).

Managed by the Department of Agriculture, Fisheries and Forestry, further information, application and claim forms can be accessed at [www.farmready.gov.au](http://www.farmready.gov.au)

---

## Environmental Restoration and Rehabilitation Community Bush Regeneration Large Project Stream Grants

Community groups are invited to apply for funding for large-scale bush regeneration projects under a new NSW Environmental Trust program.

NSW Environment Minister Robyn Parker said the \$8 million Community Bush Regeneration Large Project Stream is offering grants of between \$200,000 and \$250,000 for projects which will run for up to six years.



“This new program fulfils our promise to provide additional funding to protect the natural environment and support local bush regeneration initiatives,”

“We understand that successful rehabilitation of degraded bushland requires a long-term approach with ongoing funding security.

“These new grants will resource local community organisations, like Landcare and bushcare groups, to deliver and maintain projects which protect, restore and enhance the natural environment,” Ms Parker said.

The new funding stream has been established, and will be administered, under the Trust’s existing Environmental Restoration and Rehabilitation Program.

Applications are invited for projects that:

- Regenerate degraded natural areas, including bushland, riverbanks, degraded waterways and rare and endangered ecosystems.
- Improve the ongoing health and improve resilience of important ecosystems and habitats of rare and endangered flora and fauna.
- Improve ecological connectivity within and between natural areas.
- Improve the capacity of, and resource local community groups to protect, restore and enhance the environment by strengthening local community organisations whose primary purpose is to undertake environmental works in their local area.

Applications for projects which include partnerships, collaboration, other funding sources and in-kind contributions are encouraged.

**The eligibility criteria for applicants have changed.**

The [guidelines](#) (📄 170KB) were updated on 13 January 2012.

**The date for submission of applications has been extended by 2 weeks**

**Applications now close on 14 February 2012.**

Full details at [www.environment.nsw.gov.au/grants/BushRegeneration.htm](http://www.environment.nsw.gov.au/grants/BushRegeneration.htm)

---

## Biodiversity Fund application round now open

The Biodiversity Fund is a key element of the Australian Government's Clean Energy Future Land Sector Package and supports land managers to store carbon, enhance biodiversity and build resilience across the Australian landscape.

The Biodiversity Fund provides support to land managers to establish new biodiverse carbon stores or better manage existing stores in high conservation areas. So, if you have a good idea for a project that involves activities which restore, manage or better protect biodiversity on public or private land, submit a Biodiversity Fund application.

Applications are now open and you can get a copy of the Biodiversity Fund grant application guidelines, along with information about how to apply for a grant at [www.environment.gov.au/cleanenergyfuture/biodiversity-fund/apply.html](http://www.environment.gov.au/cleanenergyfuture/biodiversity-fund/apply.html)

**Applications close 5pm AEDT Tuesday 31 January 2012.**

## Action on the Ground - Carbon Farming Futures Grant Program Open

The Guidelines for the first funding round of the Federal Government's Carbon Farming Futures program have just been released.

Applications can be submitted for funding of up to \$605,000, for projects to be carried out by 30 June 2015.

Funding through this Action on the Ground program is for projects that trial to demonstrate agricultural greenhouse gas emission reductions or carbon sequestration. Some examples of projects that would be eligible for funding include:

- animal management and feed strategies that can reduce methane emissions
- management strategies to reduce soil nitrous oxide emissions, including the use of chemical inhibitors
- planting, rotation, cropping or grazing practices to reduce agricultural greenhouse gas emissions from soil and/or increase carbon stored in soil
- on-farm management practices and abatement technologies to reduce agricultural greenhouse gas emissions from agricultural wastes
- other practices and abatement technologies that can be demonstrated on-farm to have the potential to reduce agricultural greenhouse gas emissions and/or increase carbon stored in soil.

Applications must meet requirements outlined in detail at

[www.daff.gov.au/climatechange/carbonfarmingfutures/action-on-the-ground/aotg-grant-guidelines](http://www.daff.gov.au/climatechange/carbonfarmingfutures/action-on-the-ground/aotg-grant-guidelines)

Further information, including the application form, are available at

[www.daff.gov.au/climatechange/carbonfarmingfutures/action-on-the-ground](http://www.daff.gov.au/climatechange/carbonfarmingfutures/action-on-the-ground)

---

## Caring For Our Country – 2012/13 Business Plan Released

The 2012–13 business plan is the last in the first phase of Caring for our Country. With several five-year outcomes already achieved, this business plan identifies those targets that will benefit from more investment. The 2012-13 Business Plan can be viewed at [www.nrm.gov.au/funding/business-plan/index.html](http://www.nrm.gov.au/funding/business-plan/index.html)

Applications are now invited through the open call investment process under the Caring for Our Country 2012-13 Business Plan. Funding is for projects valued at between \$20,000 and \$500,000.

Priorities for investment under this round of funding include:

- Indigenous participation in NRM;
- Increasing native habitat;
- Reducing the impact of vertebrate pest animals and/or Weeds of National Significance; and
- Sustainable farm practices (improving management practices, landscape-scale conservation, and improving knowledge and skills).

Full details on the Open Call funding program, including application guidelines, are available at

[www.nrm.gov.au/funding/open-call/index.html](http://www.nrm.gov.au/funding/open-call/index.html)

---

## **WONS Control Grants Available for Work within the ACT**

The ACT Natural Resource Management (NRM) Council, with support from the Australian Government's Caring for our Country (CFOC) program, is making \$330,000 available for targeted control of Weeds of National Significance (WONS) within the ACT.

Funding is available to support community groups and rural landholders in managing WONS in the ACT through strategic and well planned on-ground actions.

The principle WONS that funds can be used to control are: Blackberry (*Rubus fruticosus aggregate*); Chilean Needle Grass (*Nassella neesiana*); and Serrated Tussock (*Nassella trichotoma*).

Grants of between \$5,000 and \$100,000 will be offered, with proponents being expected to match the funds sought 1:1 through cash and/or in-kind contributions.

Guidelines, applications and weed facts sheets are available at the ACT NRM Council website [www.actnrmcouncil.org.au/node/170](http://www.actnrmcouncil.org.au/node/170)

**Applications must be received by 5pm on 2 February 2012.**

## ActewAGL Source Water Protection Program Grants

The ActewAGL Source Water Protection Program (SWPP) aims to reduce risks to water quality within the ACT's drinking water catchments. Community and non-government organisations, individual property owners, government agencies and local councils are eligible to apply for funding through the SWPP grants scheme. Applicants must be able to demonstrate that their project meets at least one of the following objectives:



- Protects the ACT drinking water catchments from potential contaminant sources.
- Promotes catchment-sensitive land management practices.
- Delivers education and training materials and/or programs about the drinking water catchments for land managers.
- Delivers education materials and/or programs about the drinking water catchments for students.
- Delivers education materials and/or programs about the drinking water catchments for the community.
- Delivers opportunities for community participation in protection of the drinking water catchments.
- Improves drinking water catchment data gathering and information management systems.

In addition to this:

- The main benefits of the project must occur within the ACT drinking water catchments. The applicant must have an ABN.
- A maximum of \$25,000 is available for any given project.

For more information, guidelines and application documents please get in touch with the SWPP Project Team at [sourcewater@actewagl.com.au](mailto:sourcewater@actewagl.com.au) or visit [www.actewagl.com.au/sourcewater](http://www.actewagl.com.au/sourcewater).

## Training / Conferences / Forums

### PestSmart Roadshow

The Invasive Animals CRC is bringing the PestSmart Roadshow to a place near you in 2012.

It will showcase best practice pest management incorporating currently used techniques and the latest innovations. New products to be covered include the following:



- **For wild dogs and foxes:**  
PAPP baits, Blue-Healer™ antidote, M-44 ejectors and Lethal Trap Devices
- **For feral pigs:**  
PIGOUT®, PIGOUT® Econobait, HOG-GONE®, HogHopper™, and a nitrite concentrate
- **For rabbits:**  
carbon monoxide fumigator and freeze-dried Rabbit Haemorrhagic Disease for carrots
- **For foxes and cats:**  
spray tunnel technology

Information and product demonstrations will be brought to you directly by the species experts.

The first Roadshow will be in Queanbeyan on **Monday 30th January** at the Queanbeyan Conference Centre

Visit the [Invasive Animals CRC website](#) for other dates and venues and to register.

[Download](#) the Roadshow calendar (📄 350KB)

### Friends of the ANBG Thursday Lunchtime Lecture Series

The Friends of the Australian National Botanic Gardens organise lunchtime lectures on Thursdays between February and November usually at 12.30pm at the Theatrette at the ANBG Visitor Information Centre. Gold coin donation on entry is appreciated.

Date	Speaker	Topic
2 February	Mark Carmody	<i>Come into the Garden</i>
9 February	Tonya Haff	<i>Calling in the Face of Danger : Parent/offspring communication under the risk of predation</i>
16 February	Ken Old	<i>Fungal pathogens : threats to Australian bush and gardens, with specific reference to guava rust (Puccinia psidii)</i>
23 February	Dr Gemma Hoyle	<i>Future of Alpine Offspring</i>
1 March	Nicki Taws	<i>Changes in Bird Occupancy - with habitat change in ACT woodlands</i>
8 March	Dr Andrea Leigh	<i>Desert Leaves - When being small and thick keeps you out of trouble.</i>
15 March	Don Beer	<i>Sir Joseph Banks - botanical collector and public man of science</i>
22 March	Max Bourke AM	<i>Trees and Arboreta - History and Science</i>
29 March	Kaiya Browning	<i>Landscape Architecture - ANBG project design and philosophy</i>
5 April	Rosemary Purdie	<i>Wildflowers and Vegetation of Kamchatka, Far East Russia</i>
12 April	Andrew Thornhill	<i>Pollen - Nothing to Sneeze at</i>
19 April	Kim Pullen	<i>A Short Walk in the Pyrenees</i>
26 April	Ted Edwards	<i>Glimpses into the World of Australian Moths</i>

More information is available on the [Friends' website](#)

## Don't be a Drifter Herbicide use workshop

Interested in learning more about herbicide application?

Are you a **landholder in the ACT or in the Googong or Upper Murrumbidgee catchments** south of the ACT?

Are you working with herbicides as a **Park Carer/landcarer in the ACT or in the Googong or Upper Murrumbidgee catchments** south of the ACT? If you fall into any of these categories and want to upgrade your chemical application skills, ensure your machinery is working correctly, enable up to date records and gain accreditation or reaccreditation then read on.

Southern ACT Catchment Group is organising a herbicide use training course for the 18/19 February 2012 to be held at Westwood Farm near Kambah. The concept is to deliver an advanced practical/theory session over the two days which will include using UV light to show droplets of water coloured with dye and applied to stubble, leaves or grasses at different rates, nozzles and pressures to show variables of application. Participants must attend both days.

To reinforce the workshop information spray applicators can bring along their own equipment and have their questions answered, guided by an experienced operator. The workshops have a mixture of RELEVANT theory and practice. Assessment is relevant to the participants, for example: preparing a diagram for the area to be sprayed and putting in the relevant buffer zones. Demonstrating how to keep the necessary records in a simple format, ensuring they have the MSD's they need and only the ones they need.

Chemical user accreditation (AQF3/4) or reaccreditation is available if required.

All course costs will be covered through funding to the catchment group from ActewAGL and the ACT NRM Council.

This is the third of these courses organised by the Southern ACT Catchment Group and run by Craig Day from 'Spray Safe and Save'. Craig adapts the course content to suit the requirements of the participants. I had the good fortune to attend the first course in May last year along with 16 other participants. *I have been using herbicides for over 30 years and have participated in a number of chemical use courses yet I learnt more on this course than I would have thought possible. Craig is an excellent presenter with a truly in-depth knowledge of all aspects of herbicide use and the legislation surrounding it. The practical sessions clearly demonstrate the learning gained from the theory sessions. I firmly believe that all people using herbicides at any level could gain a greater understanding of all aspects of herbicide use by undertaking this course, whether they are seeking accreditation, reaccreditation or simply a better knowledge base to work from regarding drift reduction, nozzle selection, equipment selection and calibration, to name a just few aspects.* (Steve Welch)



Comments from other participants in the May course include:

*Not having an understanding of spraying didn't restrict relevance of workshop. The course was fantastic. I wouldn't change anything about it.*

*The course was very useful and informative. Craig certainly had a detailed knowledge of spray nozzles and spraying techniques and was very effective in passing on this knowledge and practical pointers to participants.*

*Craig demonstrated what types of nozzles to use to obtain the optimum droplet size and speed to get best coverage/penetration depending on the weed being sprayed. He also showed participants how to work this out for themselves using tables on nozzle performance.*

*Craig also addressed other important issues in relation to chemical use and how to use them safely from a human health and environmental perspective, for example safe handling of chemicals, keeping appropriate records and observing appropriate buffers when spraying.*

### **Bookings are essential and places are limited:**

Contact Steve Welch on 6296 6400 or email [info@sactcg.org.au](mailto:info@sactcg.org.au)

Further information on the course will then be provided.

Whether you're using a backpack or a 12 metre wide spray rig, the same principles apply to ensure safe efficient and environmentally secure use of herbicides. Check out the videos on spray management at:

[www.dpi.vic.gov.au/agriculture/farming-management/chemical-use/chemical-use-videos/spray-risk-management](http://www.dpi.vic.gov.au/agriculture/farming-management/chemical-use/chemical-use-videos/spray-risk-management)

## Field days / Workshops / Walks-and-Talks

---

### Sustainable horse management on small properties – community field days

#### Community field days:

Jane Myers (expert on horse management) together with Alison Elvin (local expert on weed and pasture management) are holding four community field days which provide valuable horse, pasture and weed management advice relevant to your property.

For further details, please download our [community field day brochure](#) (📄 378KB).

2012 Field Day dates and venues (all field days go from 9.00am to 3.30pm)

**Saturday 28th January** – Wamboin Community Hall (RSVP by Friday 20th January)

**Sunday 29th January** - Michelago Community Hall (RSVP by Friday 20th January)

**Saturday 18th February** – Murrumbateman Country Inn (RSVP by Friday 10th February)

**Sunday 26th February** – Southern Tablelands (Venue to be confirmed) (RSVP by Friday 17th February)

#### Cost: \$20 per person

To register and for further information, contact Debbie Saunders [projects@molonglocatchment.org.au](mailto:projects@molonglocatchment.org.au) or 0422 881 685 and provide your name, contact details and which event(s) you are interested in.

These community events have been subsidised thanks to a NSW Environmental Trust grant, however numbers are limited so make sure you register early. Morning tea and lunch provided.

---



Having received some good interest from people at the workshop in Bungendore on 1 December, particularly from around Carwoola - Captain's Flat - Hoskinstown, the [Monaro Landscape Connectivity \(MLC\) project](#) team is now planning to hold the first MLC workshop in this area.

The details for the workshop are not yet finalised, but at this stage expect a 1-day workshop in the Captains Flat valley (ideally on the property of an interested landholder) in late April or early May. The workshop will help land managers to get a better understanding of native vegetation on their property, and also to look at managing it in the context of its connectivity to surrounding patches, through aerial photos and maps (which will be provided to all attendees) of native vegetation types across the landscape around their individual properties. There will also be sessions on Indigenous land management principles, and how people can begin to apply these on their property, if they are interested.

Following the workshop, interested land managers can receive advice and support from the three partners in the project (MLi, K2C and the CMA), and may also choose to apply for incentive funding through the project, to assist them to better manage native vegetation on their properties. The project team can also provide species lists for their property, and a Management Plan with recommendations to assist them in managing their native vegetation.

The Captains Flat workshop will be the first of six workshops to be held over the coming 18 months, at various locations across the Monaro. The exact location of workshops will be dependent on the EOIs received, but the aim is to ensure good coverage over the Monaro.

To express your interest in becoming involved, complete and submit the EOI form (link below).

For more information, contact Nicole Maher (Regional Landcare Facilitator):

- Email: [nmaher@murrumbidgeelandcare.asn.au](mailto:nmaher@murrumbidgeelandcare.asn.au)
- Phone: (02) 69 331 443
- Mobile: 0487 953 776

[Download](#) Information Sheet (📄 331KB)

[Download](#) EOI form (📄 321KB)

## Greening Australia Community Events

Check out the Greening Australia web page at [www.greeningaustralia.org.au/community/capital-region](http://www.greeningaustralia.org.au/community/capital-region) The web page offers up-to-date details about volunteer events, information about other GA programs, and includes a number of pamphlets that can be downloaded.



### Don't forget the regular volunteer opportunities

**Wednesday volunteers** – Volunteers meet at the GA nursery in Aranda every Wednesday morning during school term from 9:00am to 12:00 noon to assist with plant propagation and maintenance. A delicious morning tea is provided.

**Green Team** – Volunteers meet on Thursdays to head out in minibus to various sites in the ACT and surrounding area to assist with plantings, plant maintenance, hand seeding and site preparation.

**Adopt-A-Patch** – This is a program where small teams of volunteers enhance and maintain sites by planting tubestock, seeding and weeding.

If you would like to be involved with any of these groups please email or phone for more information, [admin@act.greeningaustralia.org.au](mailto:admin@act.greeningaustralia.org.au)

---

## Ranger Guided Activities:

### Experience Canberra's Wild Side

- All the family will enjoy ranger guided walks and activities.
- Join in nature-based activities—wander, walk, scramble, hike, even cycle!
- Experience wild nightlife—discover Canberra's nocturnal natives on an exciting spotlighting walk.
- Explore Aboriginal culture and history in the ACT region.
- Discover the beauty of nature on your doorstep.



All this and more at Namadgi National Park, Tidbinbilla Nature Reserve and Canberra Nature Park—the Wild Side of Canberra.

See the [Territory and Municipal Services website](http://www.territoryandmunicipalservices.gov.au) for the full calendar of ranger guided activities each month.

## Resources


### ChemCert training subsidy

You must be trained if you use any type of pesticide or herbicide on produce that will be sold commercially or if you use it as part of your job or business or if you are a volunteer working for a public authority.

You do not need to be trained if you only use small quantities of household pesticides as part of your business or work, provided that you do all of the following:

- you only apply pesticides that are ordinarily used for domestic purposes (e.g. in the home or garden), and
- are widely available to the general public at retail outlets such as supermarkets, and
- you apply the pesticide by hand or by using hand-held equipment, and
- if you use the pesticides outdoors, you use no more than 5 litres/5 kilograms of concentrate or 20 litres/20 kilograms of ready-to-use product, or
- if you use the pesticides indoors you use no more than 1 litre/1 kilogram of concentrate or 5 litres/5 kilograms of ready-to-use product.

Are you interested in undertaking a ChemCert training course? If you are, let us know - the Molonglo Catchment Group will consider subsidising training for Landcare Groups and individuals in the Molonglo catchment and, if we get enough interest, organising a course locally. A 50% subsidy on the course will be a great incentive to anyone who does any chemical application other than cutting & dabbing as they are highly likely to use more than 20 litres.

[Download](#) the information sheet and application form ( 67KB)



### Subsidy available for First Aid courses

Are you a long-serving member of your local landcare group?

Would you like to do a first aid course or a refresher course to update your skills?

The Molonglo Catchment Group is offering five NSW landcare members a subsidy to undertake first aid training.

If you are interested in the opportunity, please contact the [Molonglo Catchment Coordinator](#), for more information.

**Note:** if you are in the ACT, please contact the NRM Regional Facilitator and ACT Landcare Coordinator, Anna van Dugteren, on 6205 2914 or [anna.vandugteren@act.gov.au](mailto:anna.vandugteren@act.gov.au)

### Display Trailer available for Landcare and Park Care Groups

A purpose-built display trailer is available for use by Landcare and Parkcare groups in the ACT Region to highlight their good works and bring information to the community and their members. The trailer was purchased with assistance from Landcare Australia Limited; contributions from the Upper Murrumbidgee Catchment Coordinating Committee, Southern ACT Catchment Group and ACT Rural Landholders helped to fit it out.

The trailer comes with fold-out whiteboard/display panels, tables, chairs, brochure holders, a display toolkit and a range of generic landcare posters. Contact [trailer@molonglocatchment.com.au](mailto:trailer@molonglocatchment.com.au) for more information or to book the trailer.



*Trailer from the side with door panels open for display*



*Trailer from the side with door panels closed for transport*

## Botanical Resource Centre – Plant Identification at Your Fingertips

Not only does the Australian National Botanic Gardens display the world's largest collection of Australian native plants, it is also the home of many education and research facilities such as the Botanical Resource Centre.

Open seven days a week, the Botanical Resource Centre is a free facility available for students, researchers, plant surveyors, native plant enthusiasts, amateur botanists or anyone interested in learning how to identify and discover more about Australian plants. The Botanical Resource Centre provides access to a range of electronic plant identifying tools, microscopes and reference books to assist visitors to identify Australian plants.

Located within the Botanical Resource Centre is a public reference herbarium of native and naturalised plants of the south-east region of NSW. This library of pressed plant specimens can be used to help identify plants of the region.

Visitors are encouraged to explore the large range of dried specimens in the public reference herbarium, or to bring along their own specimens to identify and learn about at their own pace. Please be aware of potential introduction of pests and disease into the Gardens and only bring healthy samples, sealed in a plastic bag, into the Botanical Resource Centre.

### Need help getting started?

Every Thursday afternoon and Sunday morning, trained facilitators are available to help new users get started. Appointments can also be made outside these times for a one on one training session. Please call the Visitor Information Centre for details.

### Find out more

For further information on the Botanical Resource Centre, contact the Visitor Information Centre on (02) 6250 9540 or email [visitorcentre@anbg.gov.au](mailto:visitorcentre@anbg.gov.au) or visit [www.anbg.gov.au/brc](http://www.anbg.gov.au/brc)

The Botanical Resource Centre is open daily from 9.30 am to 4.30 pm and is accessed through the Friends' Lounge – just pass the café to the left.



## Atlas of Living Australia

Australians will be able to help researchers protect the amazing array of plants and animals in their local area, thanks to a new online information portal.

The Atlas of Living Australia has been developed to build a better picture of the Australian biosphere. It already holds over 23 million records on the distribution of Australia's fauna and flora, in addition to maps, images and literature. Members of the public can help to build the database by contributing local photographs and information.

The website, [www.ala.org.au](http://www.ala.org.au) focuses on Australia's amazing plants, animals, fungi and microorganisms. It provides access to an array of information, including species pages, names lists, ID keys, over 23 million records, photos, mapping tools and more. But more information about all Australian species is needed to help researchers and others protect and manage Australia's biodiversity. You can help by contributing photos and information to the site.

The Atlas project is a national scientific collaboration between the Commonwealth Scientific and Industrial Research Organisation (CSIRO), the Australian natural history collections community and the Australian Government.

---



## Blackberry Control Brochure



### Management and control options for blackberry (*Rubus* spp) in Australia

This brochure has been developed as a summary of the [National Blackberry Control Manual](#) (NSW Department of Primary Industries Weed Management Unit, 2009) and uses information contained in this manual. Copies can be downloaded or ordered from the [Weeds Australia website](#).

The brochure deals with identification of *Rubus fruticosus* agg. and includes a quick reference guide to distinguish between the different groups of blackberry. It sets out the steps to take in developing a blackberry management plan, and covers blackberry control practices and presents a case-study in community-led action for long term blackberry control.

---

"The Molonglo Catchment Group is a "group of groups" – a non-profit community organisation with membership including Landcare and Parkcare groups, individuals and other organisations concerned about natural resource management in the Molonglo catchment. The operation of the Molonglo Catchment Group and Waterwatch program is assisted by the ACT NRM Council through the Australian Government's Caring for our Country.

Office: Unit 13, Cassidy Arcade  
72-76 Monaro Street, Queanbeyan  
Mail: PO Box 1573, Fyshwick, ACT 2609  
Phone: 02 6299 2119

To subscribe to this newsletter email [coordinator@molonglocatchment.com.au](mailto:coordinator@molonglocatchment.com.au) or go to [www.molonglocatchment.com.au/news\\_&\\_events.htm](http://www.molonglocatchment.com.au/news_&_events.htm)



Australian Government

