

# Royalla Landcare

## Coming Events

- Grassy Ecosystems Management Kit  
**Workshop 21 June**
- Reading the Landscape II  
**Workshop 15 August**
- Frog Watch October
- Water Bug Survey TBA



## Inside this issue:

- |  |          |
|--|----------|
| Water Bug Survey Results                         | 2        |
| <b>Free Trees</b>                                | <b>4</b> |
| Water Quality Tests                              | 4        |
| Murrumbidgee Landcare Awards                     | 4        |
| Jerrabomberra Creek Riparian Restoration Project | 5        |
| <b>... Join In Now!</b>                          |          |

Winter 2009

## Grassy Ecosystems Management Kit Training

### What is the Grassy Ecosystems Management Kit?

The Kit is designed to help land managers (farmers, park managers, local government employees, Landcare groups etc), manage native grassland and woodland areas.

The step-by-step manual provides a practical and comprehensive guide to:

- Assess land capability, vegetation & wildlife habitat.
- Guide decision-making on management objectives.
- Develop a management plan with realistic actions reflecting both conservation and other management objectives.
- Detailed works planning.

Further information about the Kit can be found at: [http://www.tams.act.gov.au/live/environment/native\\_plants\\_and\\_animals/grassy\\_ecosystems\\_management\\_kit](http://www.tams.act.gov.au/live/environment/native_plants_and_animals/grassy_ecosystems_management_kit)

### What does the training workshop include:

- A free copy of the Management Kit (rrp. \$30)
- Discussions and field sessions.
- Morning tea and Lunch—\$5 Donation Per Person.

**Date:** Sunday 21 June 2009

**Time:** 10 am to 3pm

**Where:** Leanne and Mark Barrett's  
37 Shearer Drive  
Royalla Station Country Estate  
Royalla NSW

**What to Bring:** Sturdy walking shoes  
warm clothing and bottle of water

**RSVP:** Thursday 18 June as places are limited to 20

Maryke Booth  
work: 6280 4128  
[Royallalandcare@bigpond.com](mailto:Royallalandcare@bigpond.com)



## Water bug Survey Results

This was the first Water bug Survey undertaken by Royalla Landcare without the assistance of Bayne Geikie from ActewAGL since he completed his role as the co-ordinator of Waterwatch for Molonglo Catchment group.

Bayne's assistance twice a year since the Water bug Survey's at Royalla Country Estate began in 2002 was always a fantastic time spent bending over trays of creek water or crouched over with a magnifying glass to see if a bug was really a true bug or not.

Thank you again to Bayne Geikie for many years of service (2002-2008) to Royalla Landcare.

As usual the Signal Score shows that the creek has high salinity and nutrient levels (may be natural). The prolonged drought is beginning to show at the creek with many permanent water holes since 2002 have dried up.

	03 2002	10 2002	03 2003	11 2003	04 2004	11 2004	04 2005	12 2005	05 2006	11 2006	04 2007	11 2007	04 2008	11 2008	04 2009
<b>Very Sensitive to pollutants</b>															
Mayfly nymph	20+	20+	20+	20	9	20+	9	20+	20+	20+	20+	20+	20+	20+	2
Caddis fly larva	7	nil	2	nil	7	nil	3	8	1	nil	6	2	nil	nil	nil
<b>Sensitive to pollutants</b>															
Water mite	20+	20+	20+	20+	20+	6	10	9	nil	5	4	1	3	12	nil
<b>Moderately Sensitive to pollutants</b>															
Beetle/beetle larva	3	7	6	17	nil	8	9	3	2	2	5	11	5	nil	nil
Yabby/shrimp	6	2	1	20+	20+	1	20+	20+	20+	20+	20+	20+	20+	3	20+
Dragonfly/damselfly	20+	20+	4	20+	20+	6	8	20+	14	20+	11	20+	20+	15	20+
Fly larva/midge	5	20+	4	20+	nil	7	11	2	5	10	1	3	7	13	nil
Mussel/clam	nil	nil	nil	nil	1	nil	nil	nil	nil	nil	nil	nil	nil	nil	nil
Nematode	nil	nil	nil	nil	nil	nil	nil	nil	nil	nil	2	1	nil	nil	1
<b>Very Tolerant to pollutants</b>															
Flatworm	nil	nil	nil	nil	nil	nil	nil	2	nil	nil	nil	2	nil	nil	nil
Segmented worm	3	20+	1	14	nil	4	1	nil	nil	nil	nil	1	5	nil	4
Freshwater slater	nil	nil	nil	2	nil	nil	nil	nil	nil	nil	nil	nil	nil	nil	nil
True bug/ true bug	20+	nil	20+	20+	20+	20+	20+	20+	20+	20+	20+	20+	20+	20+	20+
Leech	3	nil	nil	nil	10	5	1	10	nil	3	1	5	4	3	nil
Snail	4	20+	20+	6	20+	20+	2	20	6	6	8	20+	20+	20+	nil
<b>Signal Score</b>	<b>4.4</b>	<b>4.1</b>	<b>4.4</b>	<b>4.0</b>	<b>3.3</b>	<b>3.8</b>	<b>4.2</b>	<b>4.1</b>	<b>4.2</b>	<b>3.9</b>	<b>4.6</b>	<b>3.6</b>	<b>3.6</b>	<b>3.5</b>	<b>3.2</b>

**RECYCLING IN ROYALLA**  
Co-Mingle Bins are provided for Paper, Cardboard, Hard Plastics, Glass, Aluminium & Steel Cans, Milk & Juice Cartons  
Location: Community Block Royalla Dr.

**WILDCARE**  
**6299 1966**

© Royalla Landcare Inc. 2009

**Indian Myna Birds**  
If you are seeing more Indian Myna Birds in the area you might like to look at the following website and download a help sheet on Trapping Indian Myna Birds.  
<http://www.indianmynaaction.org.au/>

## Reading the Landscape A down to earth workshop Saturday 15 August

### Learn How To:

- Estimate the functional status, trend and condition of grazed lands
- Identify the proximity of the functional status to critical thresholds for self-sustainability.
- Assess the role of threatening processes.
- Propose appropriate rehabilitation approaches in rangelands or remnant woodlands
- Assess the progress of rehabilitation on other lands.

### What Is It?

Reading The Landscape (RTL) is a field-based monitoring procedure, using rapidly assessed simple visual indicators, to assess how well a landscape is working as a biophysical system. It is based on recent research findings and can be applied to a very wide variety of landscape types and many land uses.

The RTL course will cover:

- An explanation of the development of RTL as a concept by Powerpoint
- Field instruction in the methodology of RTL, with active participation
- Instruction in vegetation assessment in an extended functional context
- Data reduction and tabulation software use, Instruction in the use of an interpretive framework,
- Discussion of report writing using RTL data

The instruction is provided by the originator of the approach, and a free “after-course email service” is provided.

**Workshop run by David Tongway (Fellow, CSIRO Sustainable Ecosystems & Visiting Fellow, School of Resources, Environment & Society, ANU Canberra), in conjunction with Royalla Landcare Inc.**

When: 15th August 2009

8:45am—4:30pm

Where: Leanne & Mark Barrett

37 Shearer Dr

Royalla

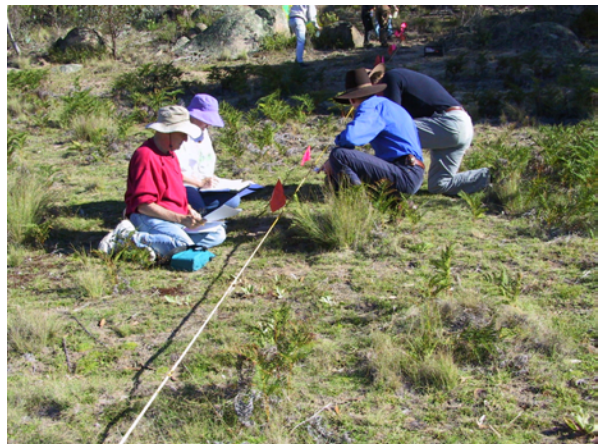
NSW

Cost: \$25

includes: CD of Course Training Material

Welcome Tea & Coffee

Morning Tea & Lunch



## Royalla Landcare - Highly Commended Murrumbidgee Regional Landcare Awards 2009

We are thrilled to announce that Royalla Landcare received a Highly Commended Award at the annual Murrumbidgee Regional Landcare Awards.

We were entered into the category of Landcare Community Group Award. "This award recognises an outstanding community group that has adopted sound management practices on public or private land and is working towards sustainable land use and/or enhancement of an area on behalf of the community."

"Royalla Landcare Group

'A great new community group that proves Landcare is alive and well.'  
- 2009 Regional Landcare Awards judges.

A relatively young group, the Royalla Landcare Group is making a difference in the increasingly popular peri-urban landcare movement and building a dedicated group of highly active members.

Drawing upon the Murrumbidgee Catchment Action Plan 2008 and the Molonglo Catchment Strategy 2004 –2014, the group is focused on achieving environmental outcomes that are not only relevant to their local area but positive for the broader catchment.

The Group undertakes projects such as Frogwatch, Waterwatch, water quality testing, fencing and re-vegetation to protect and restore endangered communities along sections of Jerrabomberra Creek. Its calendar of events includes nature walks, making nest boxes, slide nights and plant identification field walks.

Formed in 2001, the group now has over 50 members that have established a busy on-ground activity record and forged a broad spectrum of strong partnerships in the wider community in an effort to protect and enhance the local environment, foster the Landcare ethic and educate the community."

Quoted from the Awards Program 2009.



### Free Native Plants In **SPRING** 2009

Royalla Landcare will have free plants available for Landcare Members to revegetate their properties in **SPRING** 2009.

If you are interested in receiving some native plants in **SPRING** 2009 please contact Royalla Landcare as soon as possible to discuss your needs.

We can help you select the most appropriate native plants for your property or to fit into your property plans.

Contact:  
Maryke Booth: 6280 4128  
Or  
Leanne Barrett: 6235 0082



### Water Quality Testing of Jerrabomberra Creek.

Every 3rd Saturday of the month we test Jerrabomberra Creek at Royalla Drive 200m south of the bridge, Site JER020. These results will one day be used to measure the success of rehabilitation projects.

Since March we have had no water at the site in the creek to test. This is the first time since 2002 that there has been no water in the creek to test. This shows that the drought is beginning to impact on our region as the permanent ponds of water in the creek have begun to dry up in the last 3 months.

## Palerang Riparian Restoration Program 2009 factsheet Royalla Park and Jerrabomberra Creek Reserve site

The Palerang Riparian Restoration Program is funded by the Australian and NSW State Governments via the Murrumbidgee CMA and is being coordinated by Palerang Council. The program involves three sites along waterways at Royalla, Carwoola and Bungendore. The site in Royalla involves weed removal and revegetation at Royalla Park, along Jerrabomberra Creek Reserve and some adjacent private land.

The key program objectives are to improve water quality through reduced in-stream sediment loads and improve biodiversity. This will be achieved by reducing weeds and planting native vegetation along the sides of the creek.

The map below shows the location of the proposed works. The general areas and proposed works are as follows:

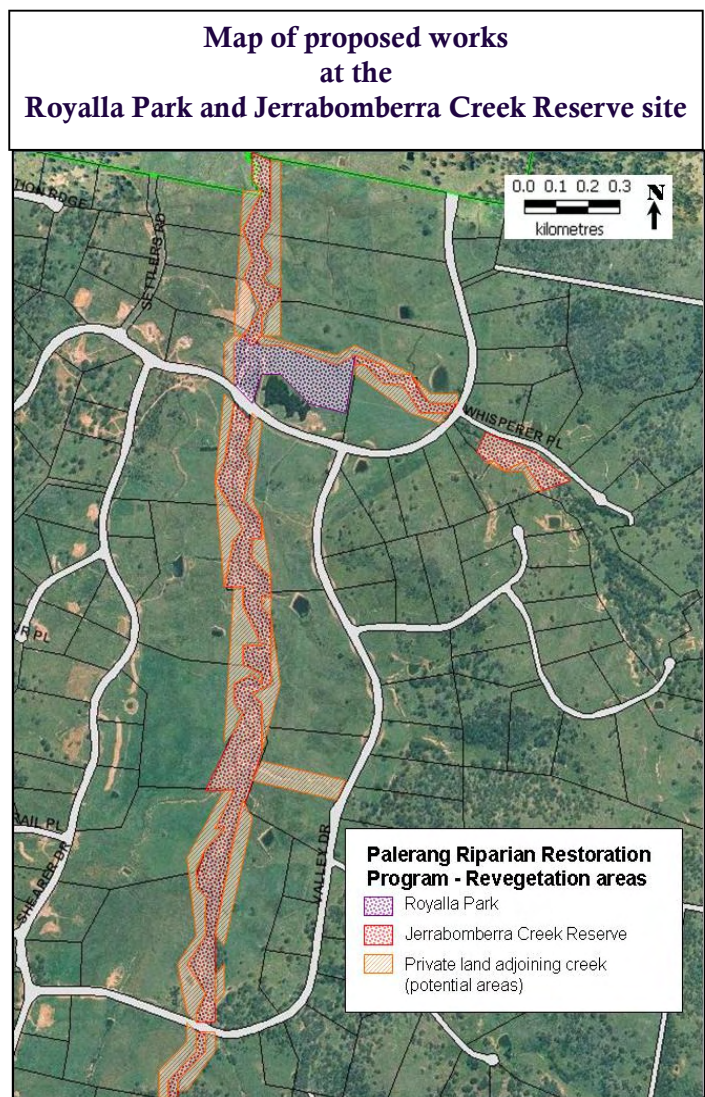
1. Royalla Park, including the open area north of the elm wood and recycle bins, extending west and north across the creeks. Noxious weeds will be controlled and a small native woodland including recreational access paths established, comprising approximately 1,500 trees/shrubs.
2. Jerrabomberra Creek Reserve, including along the main Jerrabomberra Creek and side gully near Whisperer Place. Noxious weeds will be controlled where accessible and approximately 5,000 native trees/shrubs/grasses/forbs planted on the top of the bank to complement plantings by Royalla landcare within the gully. Private land adjoining Jerrabomberra Creek Reserve, subject to agreement with individual landholders. The program will provide ground preparation, tubestock planting with guards and fencing materials. Landholders will be required to erect the protective fence and maintain the plants.

It is proposed to plant a combination of tree, shrub and grass/forb species according to the Jerrabomberra Creek Local Indigenous Planting List (available from Molonglo Catchment Group, [www.molonglocatchment.com.au](http://www.molonglocatchment.com.au), ph: 62297715, or Royalla Landcare inc., [royallandcare@bigpond.com](mailto:royallandcare@bigpond.com), ph: Maryke Booth 62804128).

The broad program outcomes relevant to this site are:

- Enhance bank stability and run-off filtration
- Improve native aquatic habitat along degraded sections of creek.
- Control identified environmental weeds within priority landscapes
- Increase the area of native vegetation managed for biodiversity conservation
- Increase the community's knowledge and understanding of NRM Issues
- Foster partnerships with private landholders, land managers, Landcare and local government authorities

The program is being coordinated by Palerang Council in consultation with Murrumbidgee CMA and Royalla Landcare. Council is seeking collaboration with landholders adjoining the creek to facilitate widening of the riparian revegetation zone. For further information contact Simon Holloway or Darren Mastermann-Smith of Palerang Council, ph: 62388111.



**ROYALLA  
LANDCARE INC.  
ABN 53 262 641 780**

Royalla Landcare Inc.  
PO Box 1573  
Fyshwick  
ACT 2609

Phone:6280 4128

E-mail:

Royallalandcare@bigpond.com

**Royalla Landcare is a very active group in the improvement and protection of the natural environment of the Royalla Area. The Royalla Area contains grassy box woodland and grassland communities, which are classed as Regionally Endangered in the Murrumbidgee/ Molonglo Catchments.**

**Out projects aim to address the following issues:**

- **Enhance local indigenous fauna and flora and avoiding loss of biodiversity.**
- **Preserve and enhancing remnant grassy woodland.**
- **Establishing linking wildlife corridors**
- **Raising community awareness and education about sustainable land management e.g.; responsible grazing techniques, erosion and weed control, caring for native ecosystems.**

## **Membership Renewal Over Due Now**

Membership renewal is now overdue, renewal is at the AGM.  
Cost is only \$25 per property. Membership entitles you to quarterly newsletters, guest speakers, and Landcare support.

**ROYALLA LANDCARE INC.  
MEMBERSHIP FORM 2009**

Name: \_\_\_\_\_

Property Address: \_\_\_\_\_

Postal Address: \_\_\_\_\_

Phone: \_\_\_\_\_

Mobile: \_\_\_\_\_

Email: \_\_\_\_\_

Annual Membership \$ 25.00

Donation \$ \_\_\_\_\_

Total \$ \_\_\_\_\_

Date / /

(Cheques payable to: Royalla Landcare Inc.)

ABN 53 262 641 780

RETURN TO:

Royalla Landcare

PO Box 1573

Fyshwick ACT 2609

