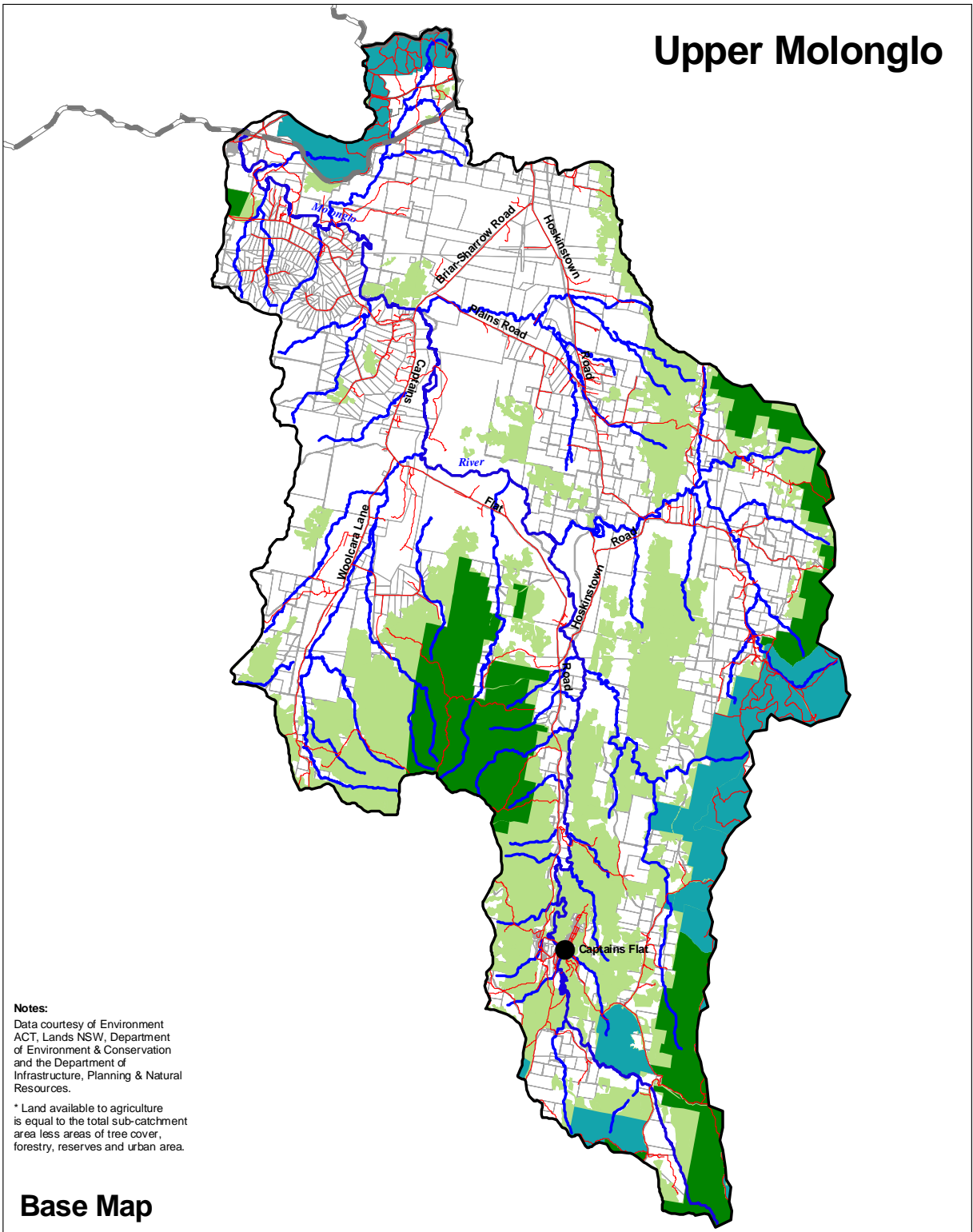


Upper Molonglo



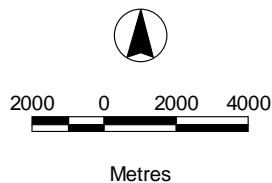
Notes:

Data courtesy of Environment ACT, Lands NSW, Department of Environment & Conservation and the Department of Infrastructure, Planning & Natural Resources.

* Land available to agriculture is equal to the total sub-catchment area less areas of tree cover, forestry, reserves and urban area.

Base Map

Area:	48,513 Ha
Roads:	437 kms
Streams:	1,475 kms
Agriculture*:	29,467 Ha
Tree Cover:	18,152 Ha
Urban:	0 Ha



- Sub-catchment boundary
- Road
- Major creek / river
- Creek / river
- Cadastre
- Vegetation cover
- Forestry
- Native Grassland
- National Park

