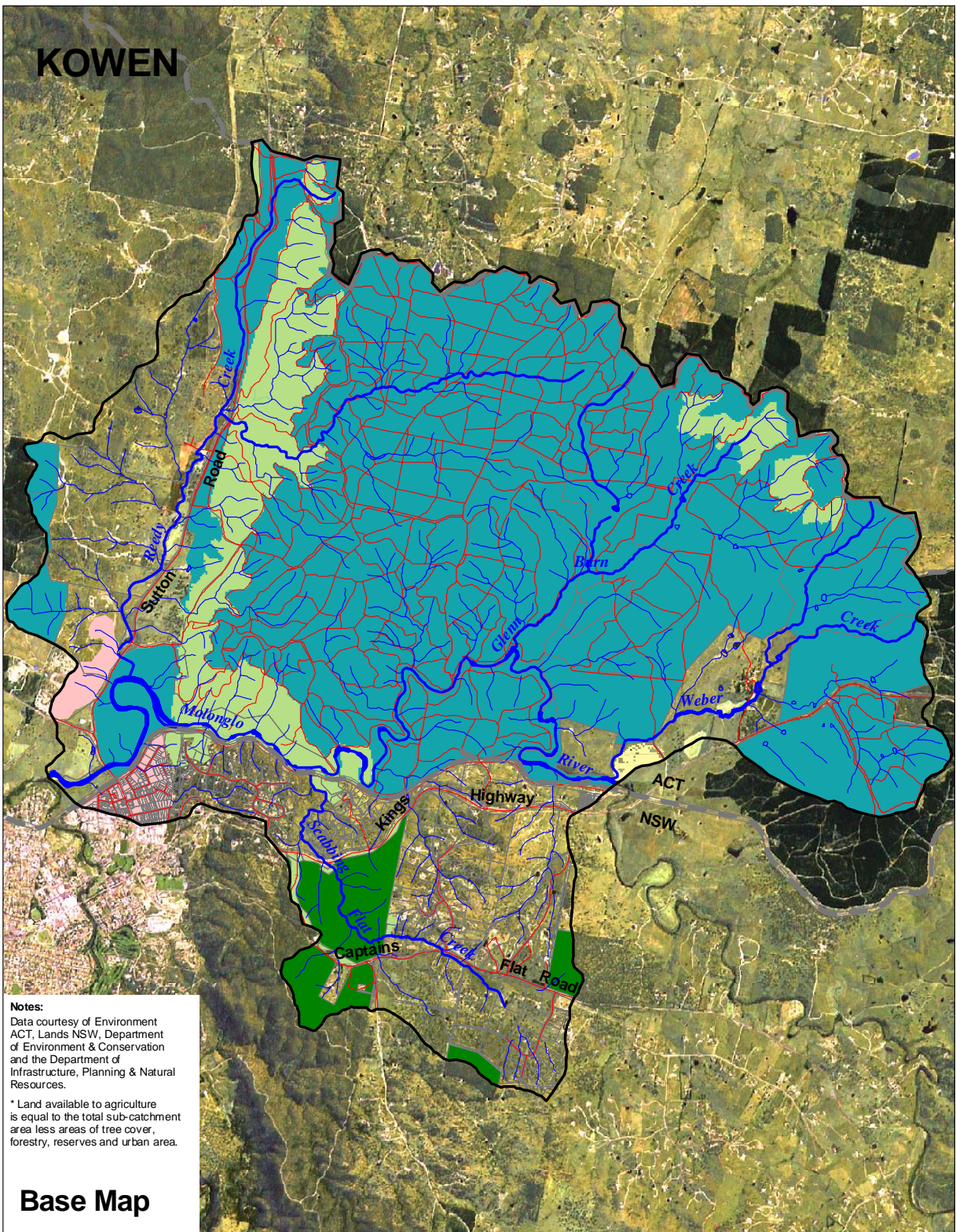


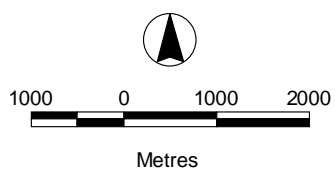
# KOWEN



**Notes:**  
 Data courtesy of Environment ACT, Lands NSW, Department of Environment & Conservation and the Department of Infrastructure, Planning & Natural Resources.  
 \* Land available to agriculture is equal to the total sub-catchment area less areas of tree cover, forestry, reserves and urban area.

## Base Map

<b>Area:</b>	9,078 Ha
<b>Roads:</b>	325 kms
<b>Streams:</b>	321 kms
<b>Agriculture:*</b>	1,710 Ha
<b>Tree Cover:</b>	7,238 Ha
<b>Urban:</b>	130 Ha



- Sub-catchment boundary
- Road
- Major creek / river
- Creek / river
- Cadastre
- Vegetation cover
- Urban
- Native grassland
- Forestry
- Nature Reserve

